

Wasps, Bees, and Ants
Order Hymenoptera



- Arthropoda - Insect
- Narrow abdomen
- 4 wings
- Complete metamorphosis

True Flies
Order Diptera



- Arthropoda –Insect
- One pair wings
- Land and aquatic metamorphosis
- Complex mouth

Beetles
Order Coleoptera



- Arthropoda –Insect
- 2 wings including elytra
- Complete metamorphosis

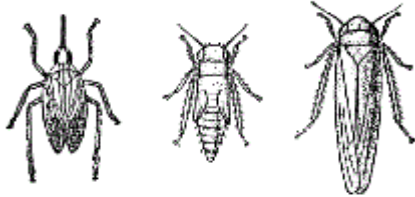
Grasshoppers and Crickets
Order Orthoptera



- Arthropoda –Insect
- incomplete metamorphosis
- 2 pair of wings
- Strong hind legs

Cicadas, Aphids, and Leafhoppers

Suborder Homoptera



- Arthropoda –Insect
- Short proboscis
- Egg-nymph-adult
- Nymphs with no wings

Butterflies and Moths

Order Lepidoptera



- Arthropoda –Insect
- Proboscis
- 2 pairs wings
- Egg-caterpillar-chrysalis/cocoon—adult

Dragonflies and Damselflies

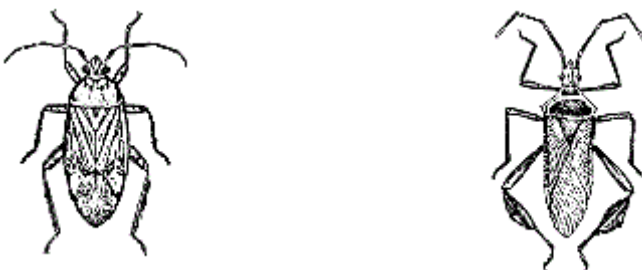
Order Odonata



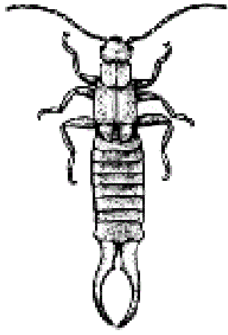
- Arthropoda –Insect
- 2 pairs wings
- Incomplete metamorphosis
- Nymph aquatic

Stink, Seed and Plant (true) Bugs

Suborder Heteroptera



- Arthropoda –Insect
- Distinct front wing
- Long proboscis
- Egg-nymph-adult



Earwigs



- Insect –Dermaptera
- Pincer
- Mesophilic to cool

Millipedes, Centipedes



- Arthropoda –Myriapoda
- Millipedes—2 pairs legs per segment
- Centipedes—1 leg per segment

Pill Bug, Wood Louse



- Arthropoda-Isopoda
- Egg-adult
- Segments can fold or completely roll

Spiders, Mites



- Arthropoda -Arachnids
- 8 legs
- No antennae
- Egg-spiderling-adult

Worms



- Annelid
- No legs

Snails and Slugs



- Gastropods
- Spiral
- Egg-slimy baby-
adult with shell